

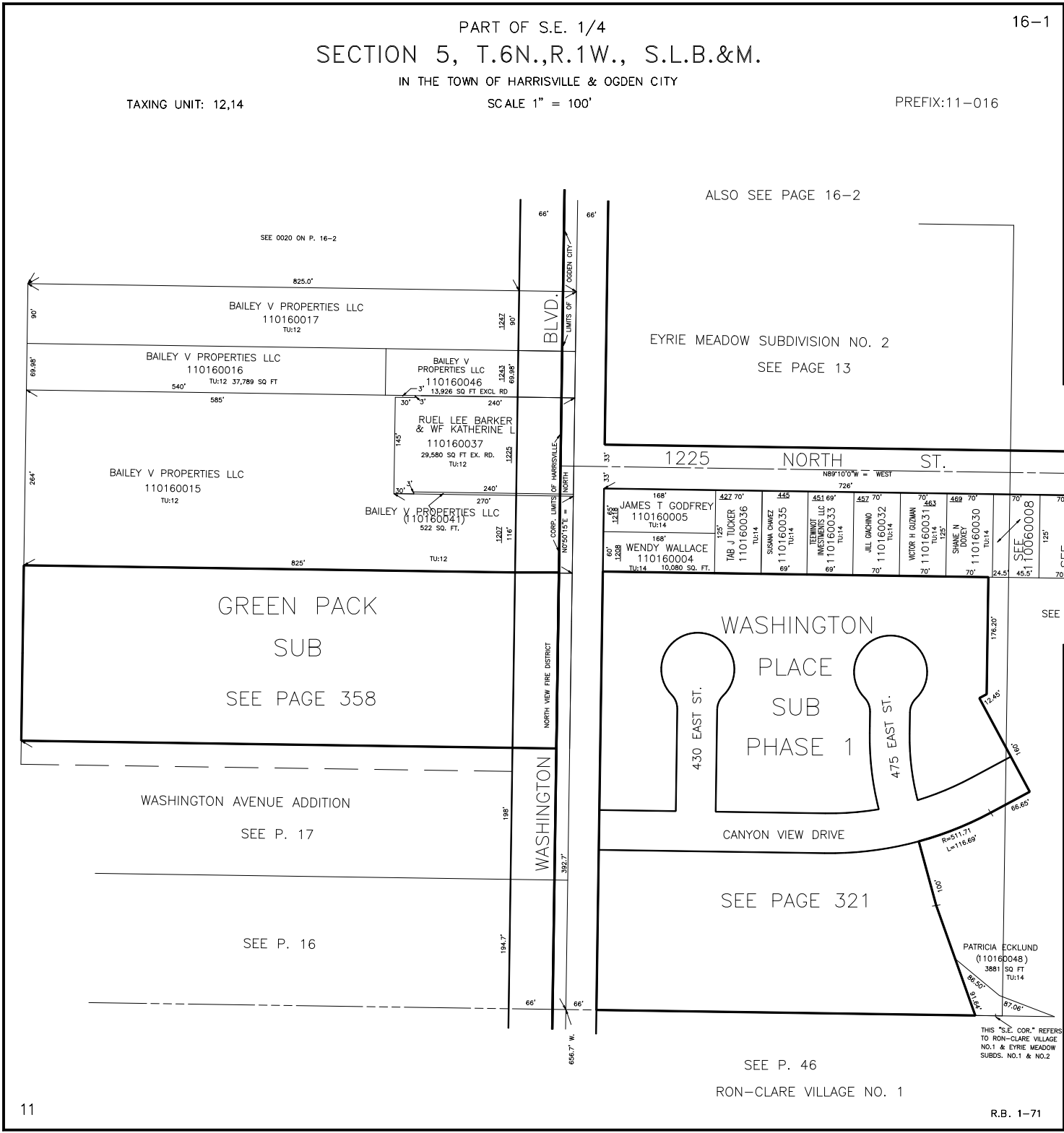
PART OF S.E. 1/4
SECTION 5, T.6N.,R.1W., S.L.B.&M.

IN THE TOWN OF HARRISVILLE & OGDEN CITY

TAXING UNIT: 12,14

SCALE 1" = 100'

PREFIX:11-016



ALSO SEE PAGE 16-2

EYRIE MEADOW SUBDIVISION NO. 2
SEE PAGE 13

1225 NORTH ST.

168' 125' 125'	168' 125' 125'	422 70' 110160036 TU:14	445 110160035 TU:14	451 69' 110160033 TU:14	452 70' 110160032 TU:14	70' 110160031 TU:14	489 70' 110160030 TU:14	70' 110160008 TU:14	70' 1100600113 TU:14
JAMES T GODFREY 110160005 TU:14		TAB J TUCKER 110160036 TU:14	SISMA GRIFFIN 110160035 TU:14	TERMINOT INVESTMENTS LLC 110160033 TU:14	JILL GACHINO 110160032 TU:14	VICTOR H GUDMAN 110160031 TU:14	SHANE N DOXEY 110160030 TU:14	SEE 110060008 TU:14	SEE 1100600113 TU:14
WENDY WALLACE 110160004 TU:14									

EYRIE MEADOW
SUBD. NO. 1
SEE P. 7

GREEN PACK
SUB
SEE PAGE 358

WASHINGTON AVENUE ADDITION
SEE P. 17

SEE P. 16

WASHINGTON
PLACE
SUB
PHASE 1

SEE PAGE 321

SEE 110060006

PATRICIA ECKLUND
(10160048)
3881 SQ FT
TU:14

SEE P. 46

RON-CLARE VILLAGE NO. 1

THIS "S.E. COR." REFERS
TO RON-CLARE VILLAGE
NO.1 & EYRIE MEADOW
SUBDS. NO.1 & NO.2